

Alto II

Brandenburg Concerto No.4

for Recorder Quartet

Allegro

J.S. Bach

9

17

25

33

41

49

57

66

74

82

104

Brandenburg Concerto No.4

126



134



142



150



158



166



174



182



190



198



207



215



223



Brandenburg Concerto No.4

230

pp

240

f

248

pp

257

mp

265

272

281

289

tr

297

305

312

319

Brandenburg Concerto No.4

327

335

342

350

359

368

377

384

392

402

412

420

Brandenburg Concerto No.4

Andante

Musical score for Brandenburg Concerto No. 4, Andante movement, measures 1-65. The score is written in treble clef, 3/4 time, and D major. It features a series of eighth-note patterns with dynamic markings (p, f) and trills (tr). Measure numbers 6, 12, 17, 22, 27, 33, 38, 44, 49, 54, 60, and 65 are indicated at the start of their respective staves.

Brandenburg Concerto No.4

Presto

Musical score for Brandenburg Concerto No. 4, Presto movement, page 6. The score is written in treble clef with a key signature of one sharp (F#) and a common time signature (C). The tempo is marked 'Presto'. The score consists of 11 staves of music, with measure numbers 7, 14, 21, 27, 33, 39, 47, 52, 61, 70, 74, and 79 indicated at the beginning of each staff. The music features a variety of rhythmic patterns, including eighth and sixteenth notes, and rests. A triplet of eighth notes is present in measure 39. The piece concludes with a final cadence in measure 79.

Brandenburg Concerto No.4

84

96

102

111

129

133

138

143

148

153

159

163

168

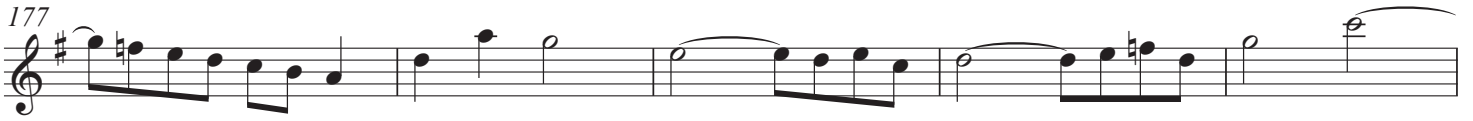
The image displays a musical score for Brandenburg Concerto No. 4, measures 84 through 168. The score is written in G major (one sharp) and 3/4 time. It consists of 12 staves of music. Measure numbers are indicated at the beginning of each staff: 84, 96, 102, 111, 129, 133, 138, 143, 148, 153, 159, 163, and 168. The notation includes various note values (quarter, eighth, sixteenth, and dotted notes), rests, and accidentals. There are several slurs and phrasing marks throughout the piece. A fermata is present over a whole note in measure 111. A 7-measure rest is indicated in measure 84. A 4-measure rest is indicated in measure 102. A 13-measure rest is indicated in measure 111. A 7-measure rest is indicated in measure 159. The score ends with a double bar line at measure 168.

Brandenburg Concerto No.4

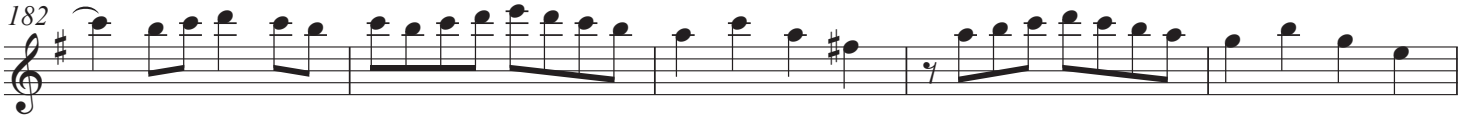
172



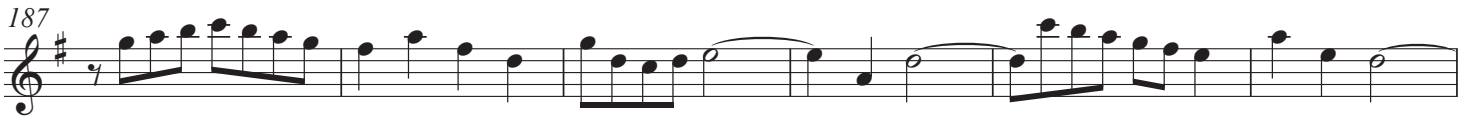
177



182



187



193



199



208



213



218



223



229



235



240

